



High Road, Chigwell, IG7

BUTLER & STAG



**This wonderful detached gated family home offers huge amounts of character and is a perfect family home, it is located between Chigwell and Woodford which both have excellent access to amenities and transport links.**



## Freehold

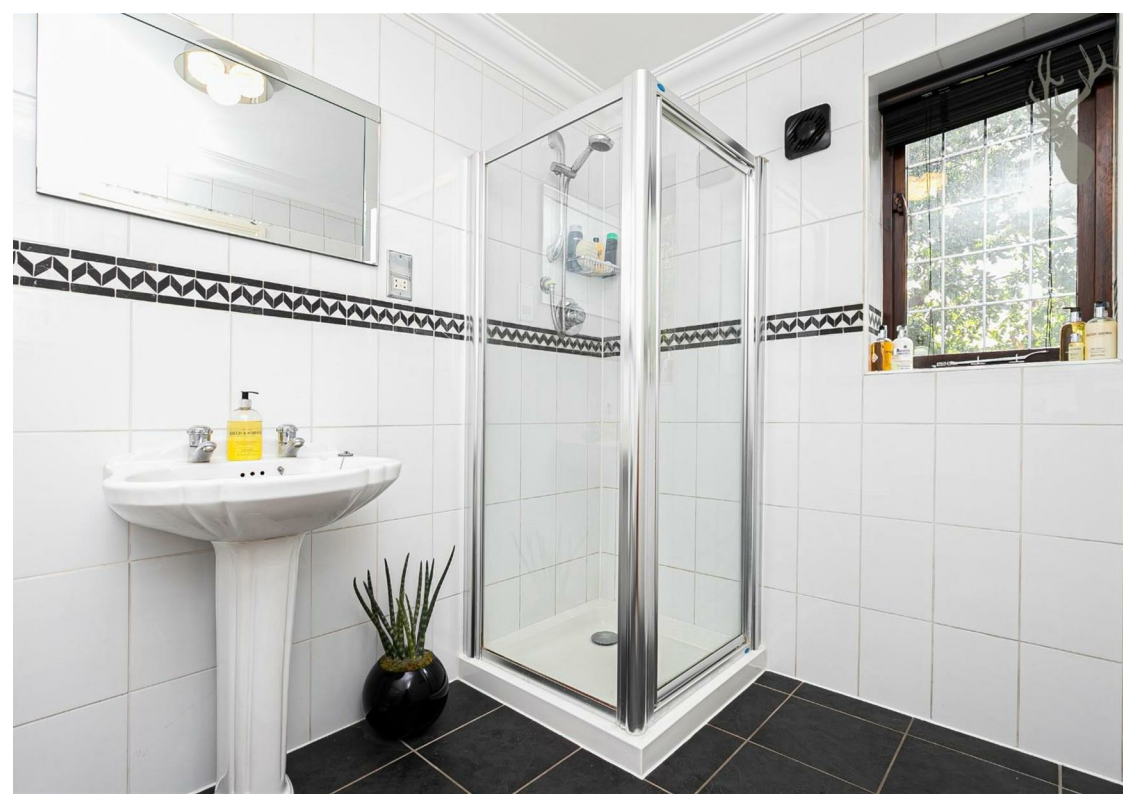
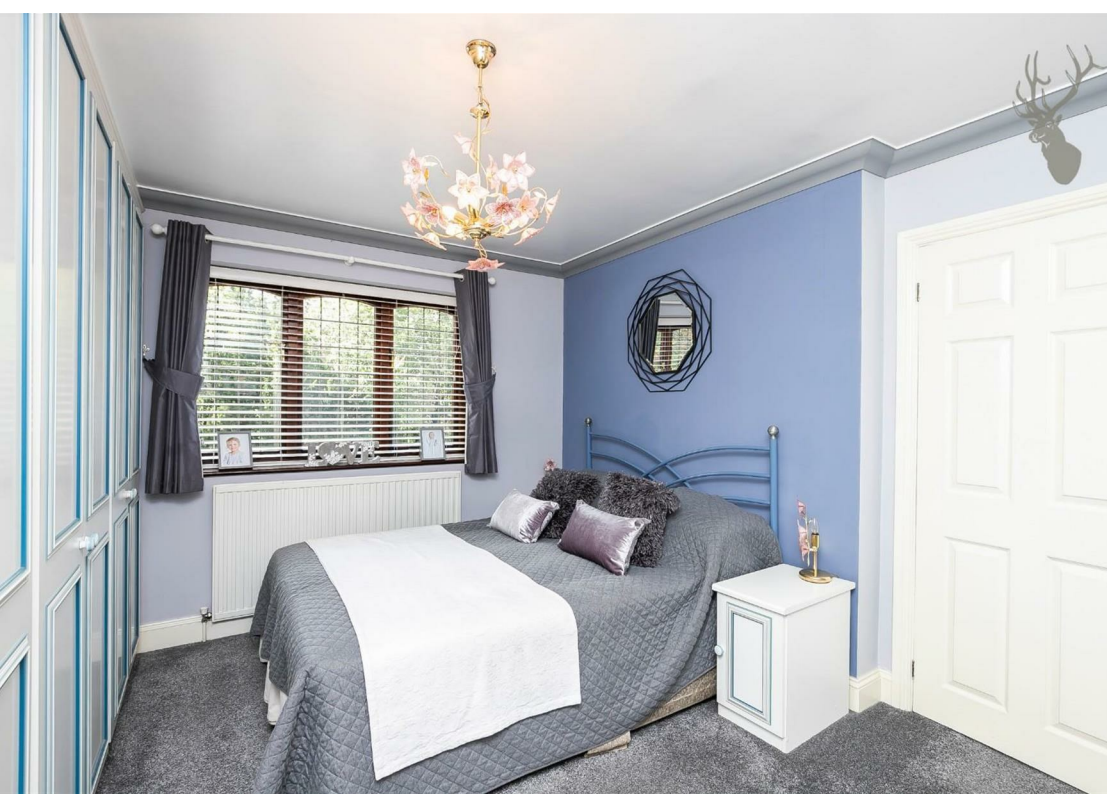
- Gated Detached Family Home
- Four Bedrooms/Two Bathrooms
- Large Lounge/Separate Kitchen/Dining Area
- Off Street Parking For Three Vehicles

Accommodation to the ground floor comprises of an entrance hall, a formal living room with doors that lead onto the private garden, also a fully fitted kitchen/dining area completes the ground floor. The first floor provides an impressive layout with four bedrooms all with fully fitted wardrobes, the master bedroom has a good size en-suite, also on the landing is a family bathroom.

Externally, the house is gated and offers a driveway for three or more vehicles with an added benefit of having a 23' garage accessed through the front or back of the house, the garden to the rear is secluded and perfect to enjoy those summer evenings.

Forest Dene is located within reach of Woodford Central Line Station which offers easy access into London. Also within close proximity is the ever popular parade of shops on Chigwell Road, boutiques, eateries and restaurants. Further local amenities include Ashton Playing Fields, Virgin Active Repton Park and Tescos Superstore. The area offers a range of access to primary and secondary schools with west hatch high school being situated just a stone throw away,

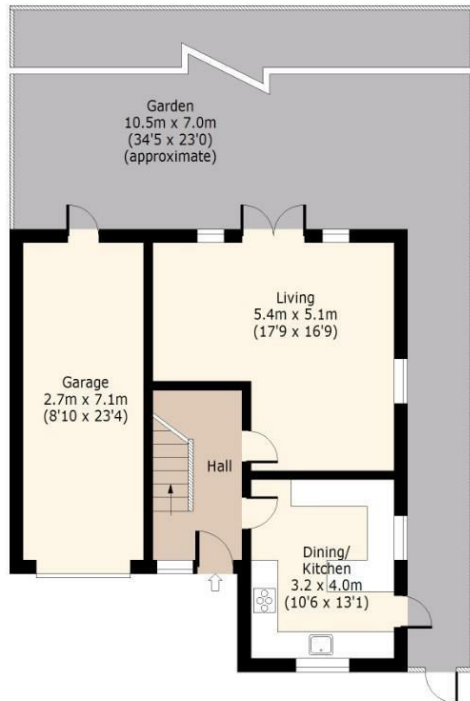




## Forest Terrace,

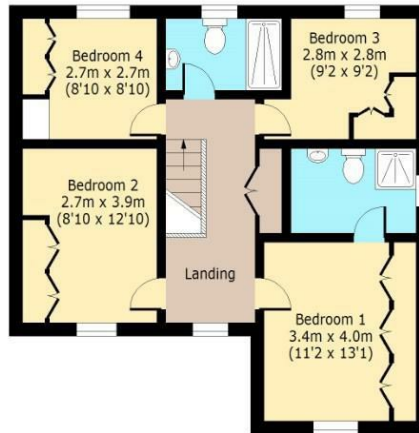
### Ground Floor

Approx. 45 Sq. meters (484 Sq. feet)



### First Floor

Approx. 67 Sq. meters (721 Sq. feet)



Total area (Including Garage): approx. 132 Sq. meters (1421 Sq. feet)  
Total area (Excluding Garage): approx. 112 Sq. meters (1206 Sq. feet)  
For illustration purposes only - not to scale  
[www.lpaplus.com](http://www.lpaplus.com)

# BUTLER & STAG

☎ 01992 667666

🏠 4 Forest Drive, Theydon Bois, Essex, CM16 7EY

✉ [theydon@butlerandstag.com](mailto:theydon@butlerandstag.com)

[www.butlerandstag.uk](http://www.butlerandstag.uk)

IMPORTANT NOTICE - These particulars have been prepared in good faith and they are not intended to constitute part of an offer or contract. We have not performed a structural survey on this property and the services, appliances and specific fittings have not been tested. All photographs, measurements, floor plans and distances referred to are given as a guide and should not be relied upon.